



Who We Are. What We Do.

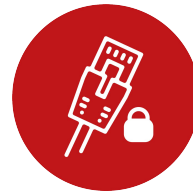
Security Solutions

Our Security. Your Privacy.

Our systems are protected from cyber threats by multiple layers of authorizations & password protections.



Recorders & cameras use embedded processors for firmware security updates.



Network traffic is encrypted in both directions.



Dash cameras allow only the registered original owner to add or modify.

“Privacy is not negotiable.”

Our Team.



ICARE & TECH SUPPORT:

Our famous customer service & tech support will help you resolve any issues.

MARKETING:

We help make it happen, from custom assets to Interactive planning and fast turnaround.

SALES:

Our Sales Execs are informed product specialists and your partners in landing sales.

PRODUCT:

Our product team keep our gear cutting-edge, tested, cost effective and in stock.

LOGISTICS:

From Product Management to loading the UPS truck, your gear is what's it's all about.

CUSTOMER EXPERIENCE:

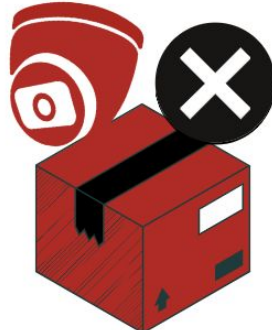
Camera Integrators & their clients love us because we are "Customer-Centric" to the core.

"Great things in business are never done by one person; they're done by a team of people."

Our ICare Commitment.



90 Day Advanced Replacement -
No Questions Asked



Field Destroy – Defective
products = No Returns



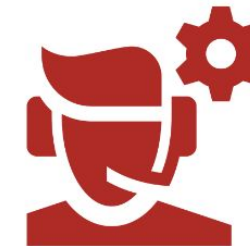
Free Upgrades - If the
Product is not Available



Discounts - On Out-of-
Warranty Products



ICare - Professional &
Dedicated Customer Care.



Lifetime Customer
Product Support

“We are committed to ensuring that all our customers are provided with the finest level of efficiency, service and courtesy.”
- Matt Sailor CEO

Our Difference.

"We are in business to make life less difficult for our clients."

We provide so much more than just cheap hardware bought off amazon & won't hold you hostage with crazy licenses.



System Layout Design Service



Lifetime Free Tech Support



Complete Dealer Onboarding



ICare Concierge level dealer service



We Have Zero Licensing Fees



Industry Leading 10 year Warranty



Free Apps to Monitor On-The-Go



Sold only through Reseller Partners



All our products are work together



In House Trainings

Our Warranty.

IC Home 7 Year
Limited Warranty



Edge 7 Year
Limited Warranty

Our Claim

Our gear is the best & most reliable in the business.

IC Realtime 10 Year
Limited Warranty

Our Proof

Our Warranties are the best in the business.

“Reliability is the precondition for trust.”

Our Product Series.

ELITE
EL

World Class
Technology

FLEX
FX

Varifocal Lens
+ FlexSmartAi

MAX
MX

Wide Angle Lens
+ FlexSmartAi

EDGE
EG

Simple
Dependability

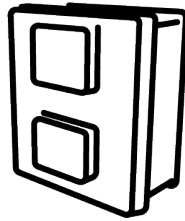
TAA
COMPLIANCY

Made in
South Korea

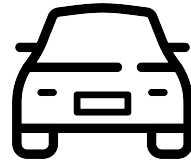


greenline

Custom Made for the
Cannabis Industry



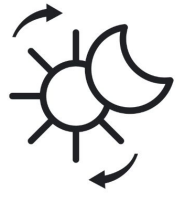
NEMA
I.C.E Box



License Plate
Recognition



Thermal
Camera



24/7
Full Color



**ACTIVE
DETERRENCE**

Engage Intruders with Light
and Sound



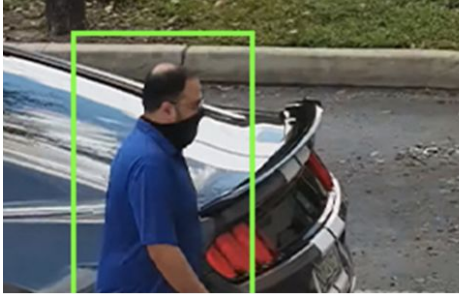
IC HOME

Secure Home Wifi
Cameras



“Great products sell themselves.”

Our Features.



IMD - FLEXSMART AI

Intelligent motion detection powered by AI.



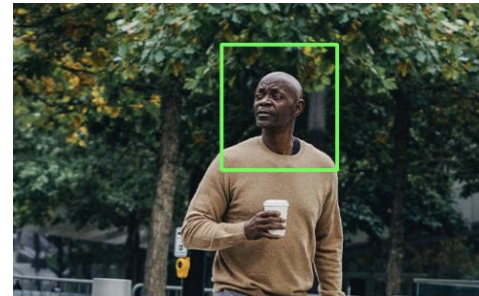
PTZ AUTO-TRACKING

Smart PTZ's seek & lock onto moving threats.



PERIMETER PROTECTION

Eradicates 90% of the false alerts with precision



FACIAL RECOGNITION

Capture and retain up to 10K facial images locally



360 & PANORAMIC CAMERAS

Comprehensive & birds eye views using one camera



PEOPLE COUNTING & HEATMAPPING

Collect and govern entrance and exit statistics



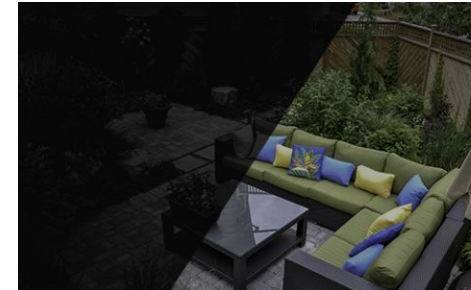
NEMA & SOLAR SECURITY

Fully enclosed weather rated video security



EXTENDED POE/POC

Extend IP or Coaxial data up to 2600ft



ISNIPER+ NIGHT COLOR

Vibrant full-color infused night vision in 0 lux

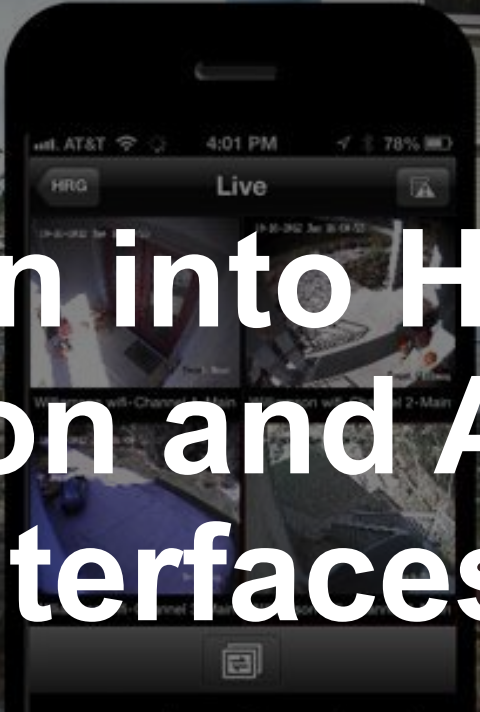


LICENSE PLATE CAMERAS

Plate & number recognition for motor vehicles



Integration into Home Automation and Access Control Interfaces



Our Quality.

We only use premium components are our free system design ensures your customer is 100% satisfied.

DORI STANDARD SYSTEM



Detection

Determine a human presence.



Observation

Begin to see distinctive characteristics.



Recognition

Verify an individual with a high degree of certainty.



Identification

Positively identify a person beyond reasonable doubt.



Less Than 1%
Failure Rate



- Starlight Chip Sets
- Sony Image Sensors
- Intel Processors



UL Network Security
Certifications

“Quality is never an accident. It is always the result of intelligent effort.”



Red	Identification	76 ppf
Yellow	Recognition	38 ppf
Green	Observation	19 ppf
Light Green	Detection	8 ppf



Free Design Layouts

Take advantage of IC Realtime's **free** security layout & designs to ensure your system delivers.

Our System Design Team understands the advanced capabilities of our equipment and provides free placement planning, so your Elite cameras are installed to meet your needs.

Product Line Up

Professional,
Private & Secure.

IC Home
InterCams™ for
inside & outside
your home.



Orb
Indoor Pan/Tilt
InterCam™



Orb Outdoor
Outdoor Pan/Tilt
InterCam™



Flooder
Outdoor Floodlight
InterCam™



Dinger Pro
5MP InterCam™
Doorbell



Singer
Wifi Doorbell
Chime



Guardi
Indoor Mag-Mount
InterCam™

How IC Home Stacks Up



- Recorder Compatible
- No Data Mining
- Integration Ready
- Cloud Optional
- “Master User” Security
- 7-year Warranty*
- Simple Agreement
- Stellar Support

Competitors

- Cloud only
- Mines & sells data
- Closed architecture
- Cloud only
- Limited Privacy
- Consumer quality
- Max 3 yr. warranty



IC Home InterCams™ are the professional “doorbell camera” alternative for dealers & integrators

EDGE CAPABILITIES

- High Quality 1080P Full HD
- 2MP & 4MP Video Cameras
- PoE or Local 12VDC Power
- Built-in Audio Options
- Wide Angle Fixed Lens
- Varifocal (Power Zoom) Lens
- Long Range IR Night Vision
- OnVif Compatibility
- TAA Compliant Models
- Outdoor Weather Rated
- Vandal Resistant
- Compatible with all lines



ELITE CAPABILITIES

- Ultra-Long Range Power Zoom Lens PTZs (40X)
- 180° Panoramic & 360° Situational Awareness
- Laser Smart IR Night Vision Illuminators
- Black, White & Stainless Options
- Advanced IP & Coax Cameras/Recorders
- Native 4K Ultra High Definition
- FlexSmartAi Full Suite
- Improved AI Autotracking & D.O.R.I Recognition
- Compatible with Other Lines



24/7 Full Color w/AI + Active Deterrence

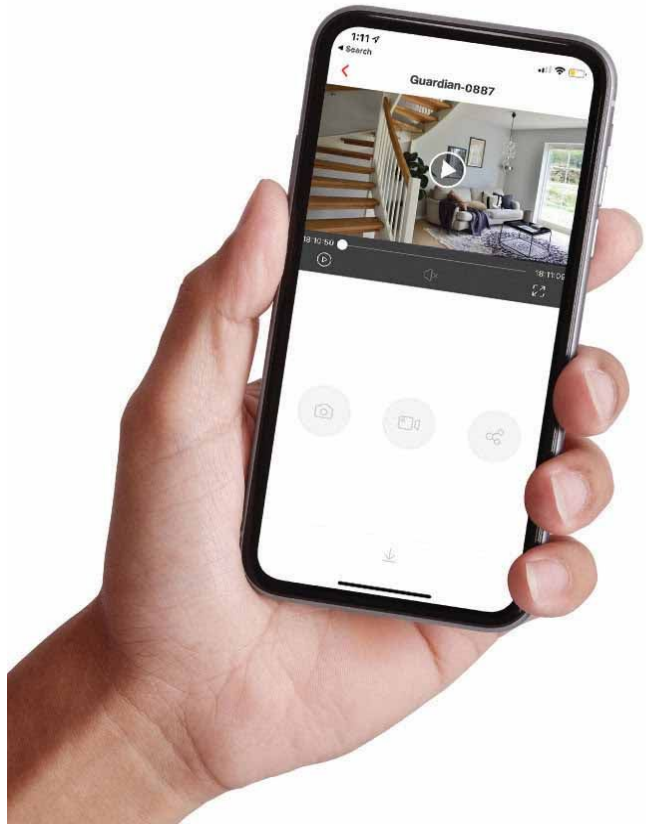
- Active Deterrence Metal Bullet
- 4MP QuadHD Starlight Sensor
- 0.003 lux Color
- Full Spectrum + Red/Blue AD LEDs
- 2.8mm Wide Aperture lens
- 103° wide FOV
- IVS, iMD, Tripwire & Intrusion
- AI Human & Vehicle detection
- Built-in Speaker/mic + Audio In/Out
- Alarm In/Out



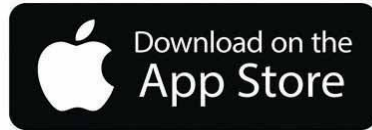
IPMX-B40F-ADW1



IPMX-E40F-ADW1



 IC HOME



IC View⁺



IC Home & IC View + Apps



THANK YOU!

Our Guarantee.

IC Realtime will continue to provide you with the latest technologies, dependable cutting-edge video equipment, concierge-level customer service, lifetime technical support, and the industry's best warranties.

"There is no greater fraud than a promise not kept."